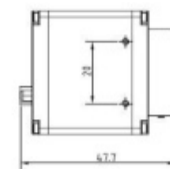
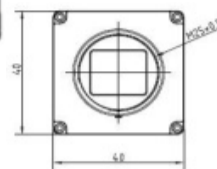
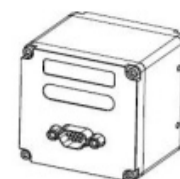




# RA 640 Uncooled LWIR IR CORE



Performance	
FOV/Minimum Focus Distance	31° x25°/1m(19mm)
N.E.T.D	≤40mK@30°C, #F1.0
Detector Type	Uncooled Microthermal VOx FPA
Resolution	640X512
Pixel Size	17μm
Spatial Resolution	0.89mrad(19mm Lens)
Environment	
Operating Temperature	-40°C to +55°C
Storage Temperature	-40°C to +70°C
Humidity	95% Non-condensing
Protection Rate	Ip45
Physical	
Weight	≤70g, Without Lens
Size	≤33mm(W)x32mm(H)x48mm(L), Without Lens
Interface & Electronics	
Interface	J30J-9(Default)
Power Supply	DC 3-10V
Analog Output	Combined: PAL@50Hz(NTSC@60Hz Optional)
Digital Output	Customized
Control	RS232(Default), RS485, RS422(Customize)
Focus	Support Two Focus Control Output,≤10V≤500mA
Power Consumption	≤2W(Static)
Start Up Time	≤20s
Optional Accessories	
Lenses	13mm: 28° x 21°
	19mm: 32.0° x 25.8°
	Above are typical standard lenses
DRI [Human: 1.7m x 0.6m]	
Detection	760m
Recognition	190m
Identification	95m

P.S: DRI values will differ based on the configuration. Recognition Can be extended to 1500 mts